



Pack Kit Installation Instructions

Recommended Tools

7/16 Socket
7/16 Wrench
Ratchet
Drill
1/4" Drill Bit
Tape Measure
4 C-Clamps or Vise Grips

Parts List

Sled (may be provided by others)
Pack Kit
Receiver Kit: 4 each Receiving Brackets
8 each 1/4" x 1 1/4" Bolts
8 each 1/4" Flat Washers
8 each 1/4" Nylon Insert Lock Nuts

STEP 1

Determine placement for the 4 Receiving Brackets (sled sizes vary)
Approximately 8" from the front of the sled
Approximately 4" from the back of the sled
Clamp the receiver to the lip of the sled
Insert Pack Kit Poles into the receiver, adjust receivers if necessary

STEP 2

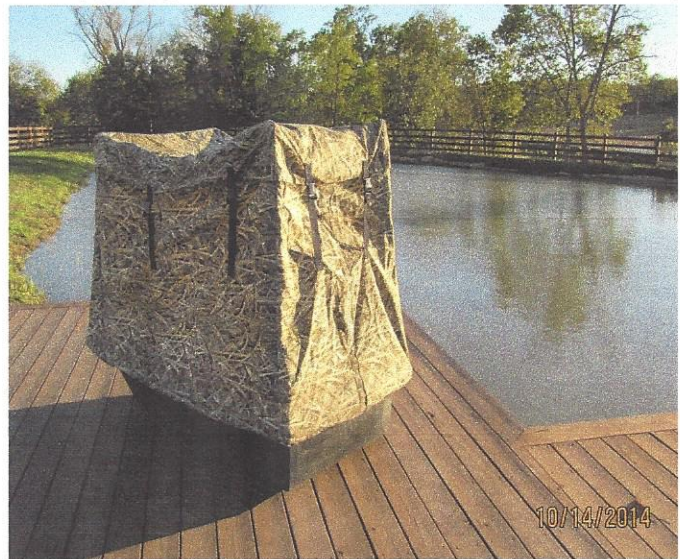
Now that you have your receivers where you want them, remove Pack Kit and drill holes into your sled.
Using your receivers as a guide, drill two 1/4" holes per receiver (receivers are drilled)

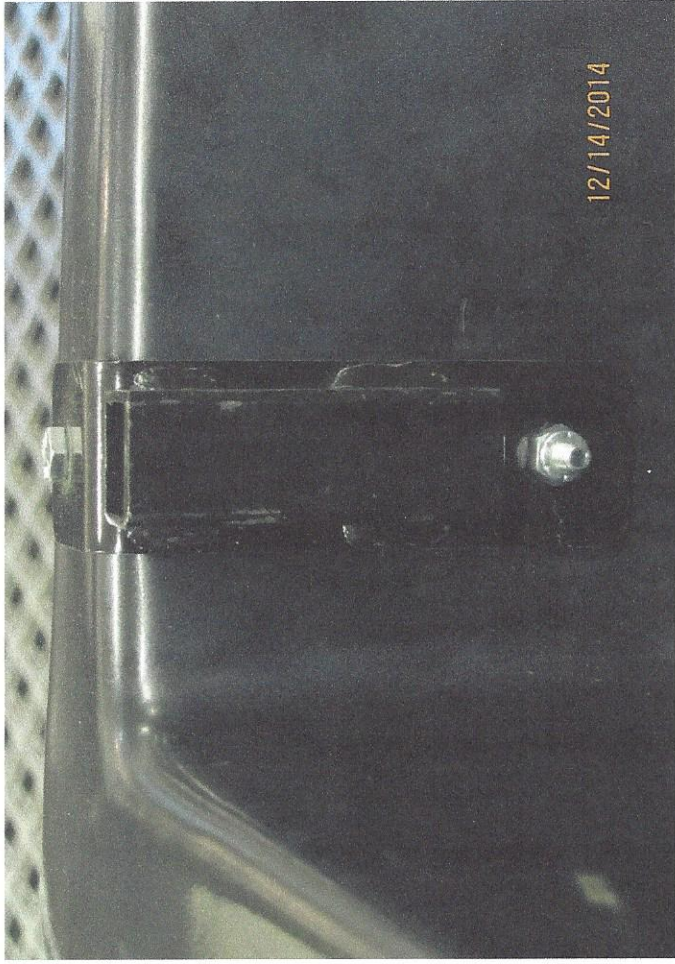
STEP 3

Insert Bolts, It is very important that the bolts be inserted from the outside of the sled as they double as a stop or resting place for the Pack Poles
Secure bolts with washers and nuts

STEP 4

Place poles into receiver (For ease of assembly & dis-assembly poles just sit in the receivers, they do not bolt in)

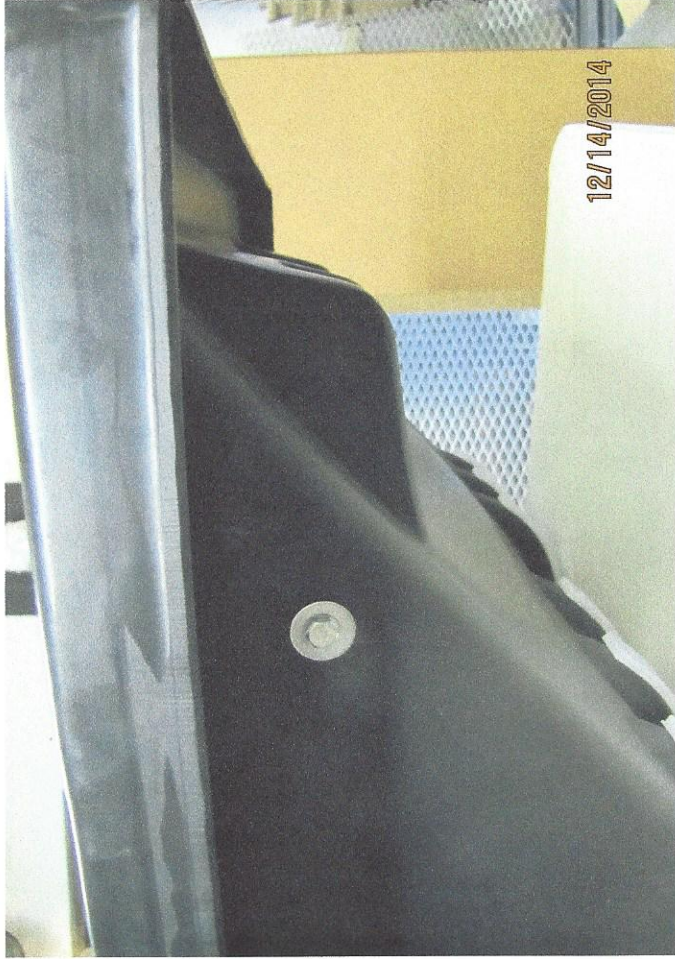




12/14/2014



12/14/2014



12/14/2014



12/14/2014